

GRIZZLY™

ROBOTIC UTILITY VEHICLE



AUTOMATION FOR THE TOUGHEST OUTDOOR ENVIRONMENTS.



ENGINEERED FOR THE GREAT OUTDOORS.

Grizzly is engineered to thrive in harsh outdoor environments. With four high-torque motors, rugged all-terrain tires and class-leading ground clearance, Grizzly will take your field robotics to new extremes.

BUILT UPON INDUSTRY TRUSTED SOFTWARE.

Using Grizzly to program complex autonomous systems is simple with open-source Robot Operating System (ROS). Rich demos and tutorials are provided to help you get started quickly and hassle-free.

DESIGNED FOR RAPID CUSTOMIZATION.

When research changes, so should your hardware. Make changes to Grizzly in a snap with flexible payload mounting, easy to access on-board power and reconfigurable I/O. Mobile robot prototyping has never been faster or easier.

A FEW OF THE INNOVATIVE FIRMS WHO USE OUR ROBOTS



Contact us today for pricing and a free 30 minute technical assessment: 1-800-301-3863

TECHNICAL SPECIFICATIONS



DIMENSIONS L x W x H	1750 x 1282 x 811 mm 69 x 51 x 32 in	RATED DRAWBAR	A: 3100N / 700lbf B: 6230N / 1400lbf	USER POWER	5 / 12 / 24 / 48 V (Fused)
WEIGHT A: Base; B: Heavy-Duty	A: 660kg / 1450lb B: 910kg / 2000lb	TOWING RUNTIME	A: 1.5hr B: 3hr	ENVIRONMENTAL	IP 65 -10 / +30 °C
RATED PAYLOAD	A: 600kg / 1320lb B: 350kg / 770lb	CRUISING RUNTIME	A: 6hr B: 12hr	BASE SENSORS	ENCODERS, GPS, IMU
GROUND CLEARANCE	20.3cm / 7.9in	CHARGING TIME	A: 6hr B: 12hr	DRIVERS/APIs	ROS, C++
MAXIMUM SPEED	A: 19km/h / 11mph B: 8.3km/h / 5.1mph	MAXIMUM INCLINE	30 deg 60%	CONTROL MODES	TELE-OP. SEMI-AUTON. FULL-AUTON.

SAMPLE APPLICATIONS

HEAVY-DUTY APPLICATIONS



Grizzly is designed for heavy-duty industry applications making it the ideal platform for **agriculture, mining, and military** research, development and testing.

PERCEPTION & NAVIGATION



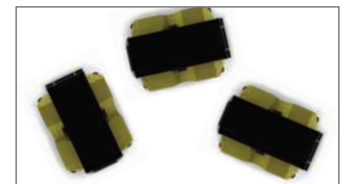
Improve state estimation with tunable vehicle control parameters, high-resolution wheel odometry and full power system diagnostics.

CONQUER ANY TERRAIN



Grizzly's **rugged and robust design** is engineered for off-road use. With four high-torque motors, all-terrain tires, and amazing ground clearance, Grizzly is equipped to handle any terrain.

MULTI-ROBOT SYSTEMS



A single operator can control many Grizzlies via a rugged mobile operator control station that uses a scalable outdoor network communication infrastructure.

CONTACT US FOR MORE INFORMATION

Clearpath Robotics Inc.
148 Manitou Dr., Kitchener, Ontario
N2C1L3, Canada

TEL: 1-800-301-3863
FAX: 1-888-374-0091
@: info@clearpathrobotics.com
web: www.clearpathrobotics.com

Don't Forget to Find Us Online

